



Rabbit anti STAT5 (pY694) Polyclonal Antibody

Alternative Name(s): Signal transducer and activator of transcription 5

Order Information

- **Description:** STAT5 (pY694)
- **Catalogue:** 500-9334
- **Lot:** See label
- **Size:** 100ug/200ul
- **Host:** Rabbit
- **Clone:** nan
- **Application:** IHC(P), WB
- **Reactivity:** Hu, Ms, Rt

ANTIGEN PREPARATION

A synthetic peptide surrounding to the epitope -DGYVK-- with phosphorylation sites at Tyr694 of STAT5 protein from human, mouse and rat origins.

BACKGROUND

STAT proteins (Signal transducer and activator of transcription) belong to a family of cytoplasmic transcription factors that can be phosphorylated by a ligand binding to its cell surface receptor. STAT5 is tyrosine phosphorylated in response to IL-2, IL-3, IL-7, IL-15, GM-CSF, growth hormone, prolactin, erythropoietin and thrombopoietin. Serine phosphorylation is also required for maximal transcriptional activity. NCoA-1/SRC-1 acts as a co-activator for both the a- and b-isoforms of STAT5.

PURIFICATION

The Rabbit IgG is purified by site-modified Epitope Affinity Purification.

FORMULATION

This affinity purified antibody is supplied in sterile Phosphatebuffered saline (pH7.2) containing antibody stabilizer

SPECIFICITY

This antibody recognizes STAT5 (pY694) with a phosphorylated sites of Tyr694. It does not cross-react with non-phosphospecific peptide.

STORAGE

The antibodies are stable for 24 months from date of receipt when stored at -20oC to -70oC. The antibodies can be stored at 2oC-8oC for three month without detectable loss of activity. Avoid repeated freezing-thawing cycles.

APPLICATIONS/SUGGESTED WORKING DILUTIONS*

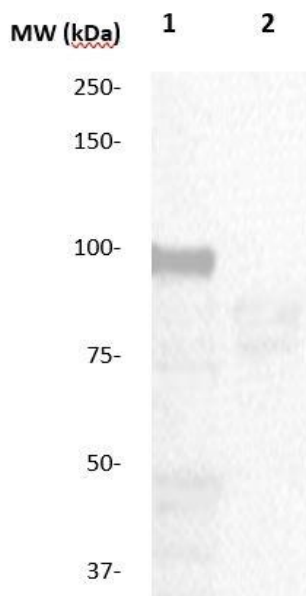
- Western Blot: 0.1-1 µg/ml
- ELISA: 0.01-0.1 µg/ml
- Immunoprecipitation: 2-5 µg/ml
- IHC: 2-10 µg/ml
- Flow cytometry: Not tested
- Molecular Weight: 92.0
- Positive Control: Kidney Tissue
- Cellular Location: Cell Membrane

*Optimal dilutions should be determined by researchers for the specific applications.

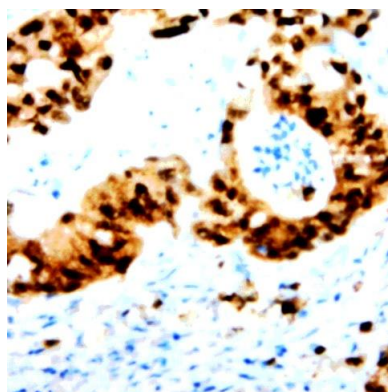
FOR RESEARCH USE ONLY.

AbboMax, Inc 2528 Qume Drive, Suite 8, San Jose, California 95131, USA
1 408-573-1898 (Tel). 1 408-573-1858 (Fax). www.abbomax.com info@abbomax.com

DATA ATTACHMENTS



Western Blot: The tissue lysate derived from GH stimulated mouse liver was immunoblotted by Rabbit anti STAT5 (pY694) (Cat#500-9334) antibody at 1:500 (lane 1). Lane 2 is a negative control. Observed a major immunoreactive band at molecular weight ~92 kDa.



Immunohistochemistry: Human breast carcinoma tissue (FFPE) stained with Anti-STAT5 (pY694) (Cat#500-9334) antibody at 1:100 for 10 min @ RT. Staining of formalin-fixed tissue requires boiling tissue sections in 10 mM Citrate Buffer, pH 6.0 for 10 min followed by cooling at RT for 20 min.

REFERENCES

FOR RESEARCH USE ONLY.

AbboMax, Inc 2528 Qume Drive, Suite 8, San Jose, California 95131, USA
1 408-573-1898 (Tel). 1 408-573-1858 (Fax). www.abbomax.com info@abbomax.com